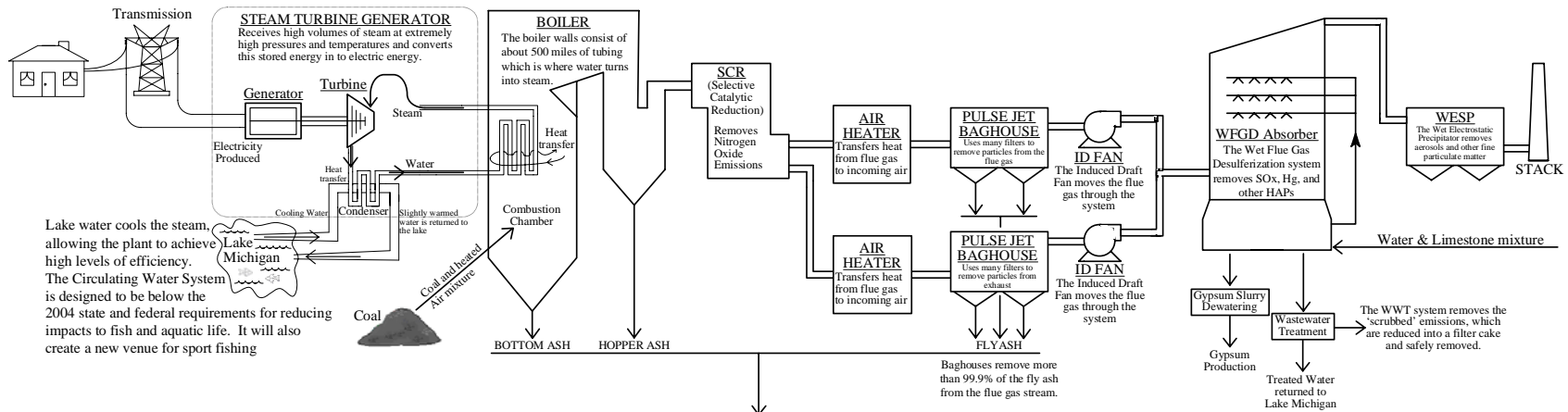


ELM ROAD GENERATING STATION PLANT OVERVIEW



Lake water cools the steam, allowing the plant to achieve high levels of efficiency. The Circulating Water System is designed to be below the 2004 state and federal requirements for reducing impacts to fish and aquatic life. It will also create a new venue for sport fishing

Bottom Ash, Economizer Hopper Ash, and Fly Ash are all recycled. In Wisconsin, 98% of the ash created by We Energies is utilized in the construction of roads, buildings, research, or in other various ways. We Energies has received national recognition by industry peers for their ash utilization program, which is **3 times** more successful than the nation wide average!